

JOLLIFT NM65

65MM LOWERED HEIGHT



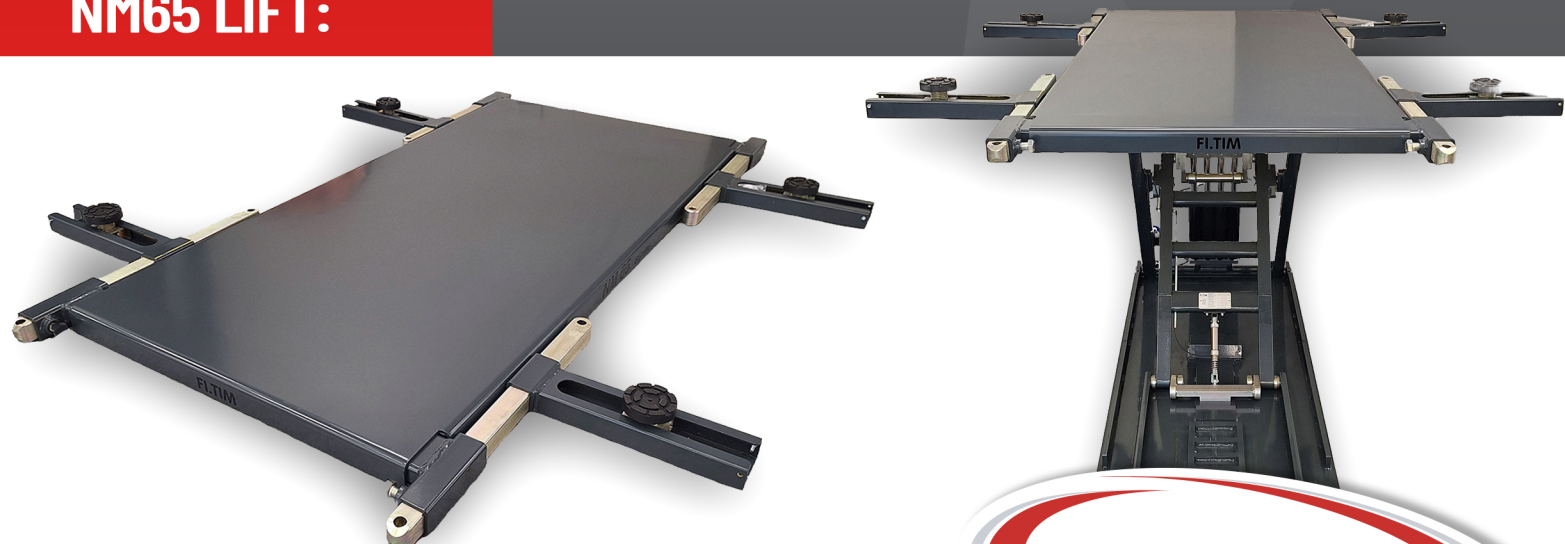
LOW-PROFILE VEHICLE LIFT MADE IN ITALY!

The Jollift Flat Line NM65 is a cutting-edge vehicle lift re-defining industry standards. Crafted with precision in Italy, this powerhouse boasts a lift capacity of 3000kg, effortlessly handling various vehicle types. With a sleek lowered height of just 65mm, it offers unparalleled accessibility for low-profile vehicles. Reach new heights with a maximum elevation of 1210mm, ensuring ample clearance for repair tasks.

FEATURES:

- Fast vehicle lift
- Italian made
- 65mm lowered height
- 1210mm lift height
- 3000kg lift capacity
- Estimating, assembly and disassembly

NM65 LIFT:



CALL US ON: (02) 9772 9097

OR VISIT SHOP.SAPE.COM.AU FOR ALL YOUR COLLISION REPAIR EQUIPMENT NEEDS

SAPE
GROUP